

## Achsführungen

### Vorn:

- 4182-36 Big Twin, 1936-48
- 4182-48 Big Twin, 1949-66
- 4182-67 Big Twin, 1967-71

### Hinten:

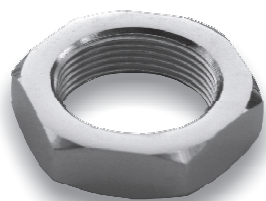
- 4008-36 Big Twin, 1936-57
- 4004-41 WL, WLA, WLC 1941-1952
- 4008-58 Big Twin, 1958-62
- 4008-63 Big Twin, 1963-66
- 4008-67 Big Twin, 1967-72

## Achs-Distanzen

### Vorn:

### Hinten:

- 3961-30 Achsführung - Mutter, Big Twin, 1930-72, Zink
- 3961-30C Achsführung - Mutter, Big Twin, 1930-72, Chrom
- 3961-M1 Ankerplatte - Schwinge, Big Twin 1958-62, Chrom, OEM 41596-58
- 3961-M2 Ankerplatte - Schwinge, Big Twin 1963-72, Chrom, OEM 41596-63
- 4007-36 Rahmen - Nabe, Big Twin 1936-57, Zink,
- 4007-36C Rahmen - Nabe, Big Twin 1936-57, Chrom,
- 4007-38 Rahmen - Nabe, WL, WLA, WLC 1938-1952, Zink
- 4007-38C Rahmen - Nabe, WL, WLA, WLC 1938-1952, Chrom



3963-30C

## Muttern, Achsführung

### vorn:

- 4184-30 Big Twin, WLC, GE 1930-1971, Zink
- 4184-30C Big Twin, WLC, GE 1930-1971, Chrom

### hinten:

- |          |                                  |               |
|----------|----------------------------------|---------------|
| 3963-30  | Big Twin, 1930-72, Zink,         | ers. OEM 8095 |
| 3963-30C | Big Twin, 1930-72, Chrom,        | ers. OEM 8095 |
| 3963-30P | Big Twin, 1930-72, parkerisiert, | ers. OEM 8095 |
| 4005-35  | WL, WLA, WLC 1935-1952, Zink     |               |
| 4005-35C | WL, WLA, WLC 1935-1952, Chrom    |               |
| 4005-35P | WL, WLA, WLC 1935-1952, park.    |               |